

10 9 8 7 6 5 4 3 2 1

F

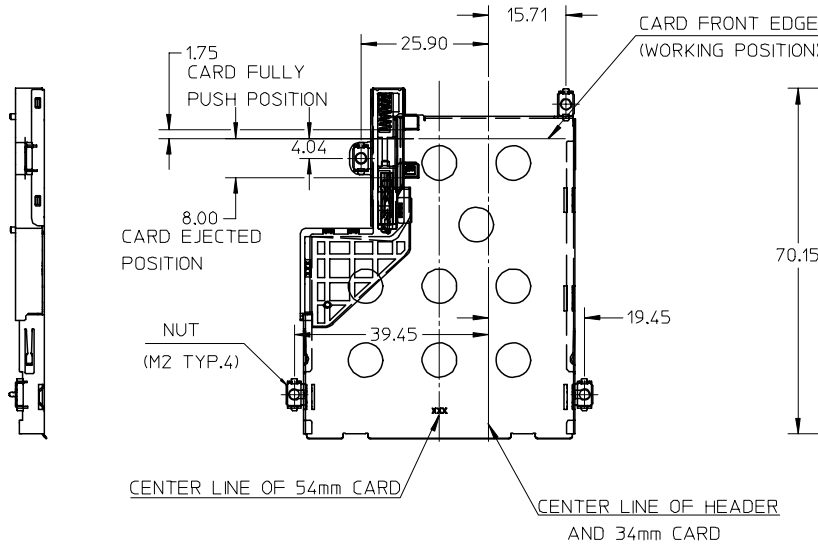
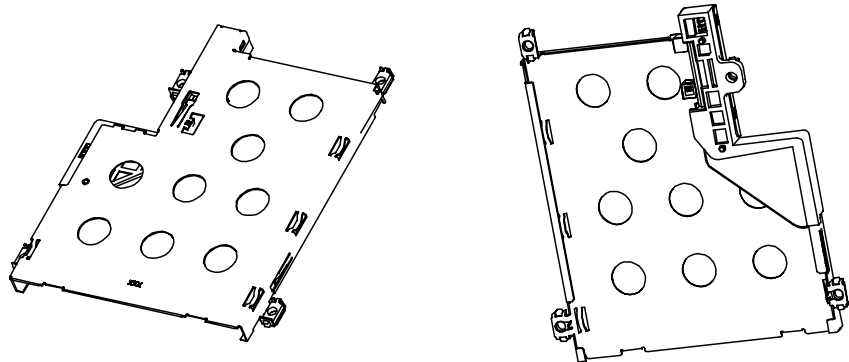
E

D

C

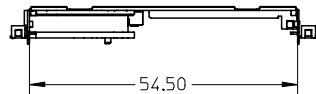
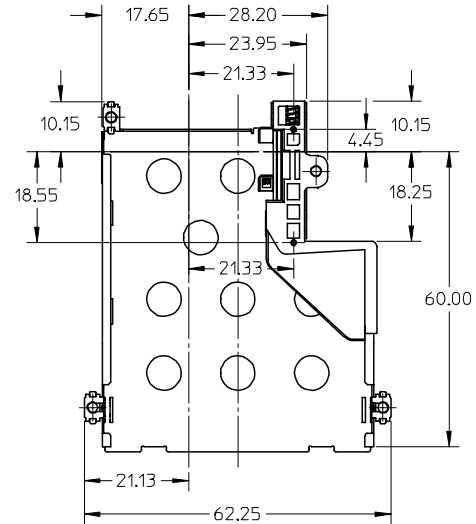
B

A



NOTES:

1. SLOT DESIGN BASED ON EXPRESS CARD ASSOC. REV:A;
2. THIS SLOT TO BE COMPATIBLE BOTH 34mm CARD AND 54mm CARD;
3. THE EJECTOR MECHANISM TO BE ASSEMBLED BASES ON 34mm CARD CENTER LINE;
4. WHEN DELIVERING, THE CAM SLIDER MUST KEEP RELEASE STATUS; (CARD EJECTED OUT POSITION);
5. APPLIABLE HEADER PLEASE REFER TO SHEET 2
6. MATERIAL:
 SHELL: STAINLESS STEEL
 STAND OFF: STAINLESS STEEL
 NUT: STAINLESS STEEL
 COIL SPRING: STEEL WIRE
 CAM SLIDER: HIGH TEMPERATURE THERMOPLASTIC
 CAM SLIDER HOUSING: HIGH TEMPERATURE THERMOPLASTIC
 CAM PIN: STAINLESS STEEL
7. PRODUCT SPECIFICATION PLEASE REFER TO PS-47202-001.



NEW RELEASE EC NO: SH2005-0413 DRWN: LBAO CHKD: 2005/07/01 APPR: YTYAP 2005/07/01 2005/07/01 2005/07/01	QUALITY SYMBOLS	GENERAL TOLERANCES (UNLESS SPECIFIED)	DIMENSION STYLE MM ONLY		SCALE 1:1	DESIGN UNITS METRIC	THIRD ANGLE PROJECTION		
	$\nabla=0$ $\sphericalangle=0$	4 PLACES ± --- ± --- 3 PLACES ± --- ± --- 2 PLACES ± 0.2 ± --- 1 PLACE ± 0.3 ± --- ANGULAR ± 2 °	DRAWN BY R. BIAN DATE 2004/12/14 CHECKED BY DATE APPROVED BY DATE	TITLE EXPRESS CARD BOTTOM MOUNT PUSH-PUSH TYPE		MOLEX INCORPORATED			
	DRAFT WHERE APPLICABLE MUST REMAIN WITHIN DIMENSIONS	MATERIAL NO. 47202-0003	DOCUMENT NO. SD-47202-001	SHEET NO. 1 OF 4		THIS DRAWING CONTAINS INFORMATION THAT IS PROPRIETARY TO MOLEX INCORPORATED AND SHOULD NOT BE USED WITHOUT WRITTEN PERMISSION			
	REV	DESCRIPTION	SIZE A3						

9 8 7 6 5 4 3 2 1

10 9 8 7 6 5 4 3 2 1

F

E

D

C

B

A

F

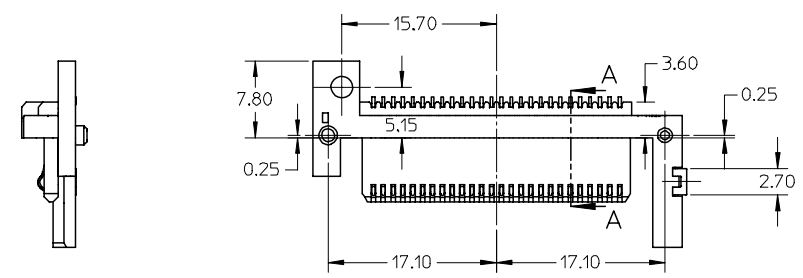
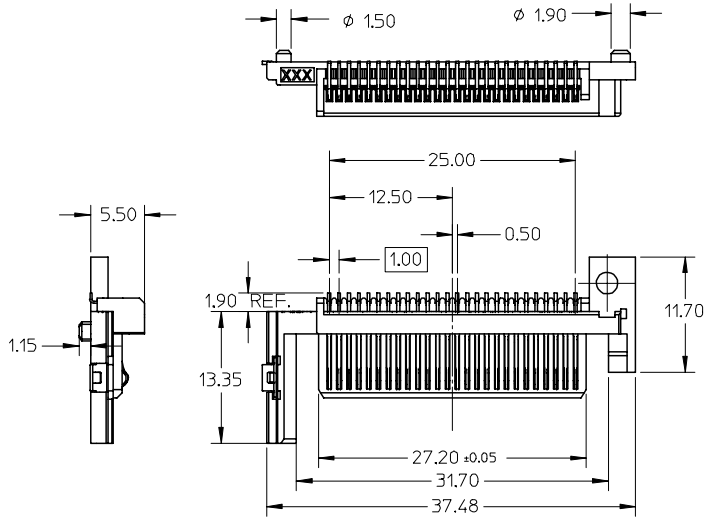
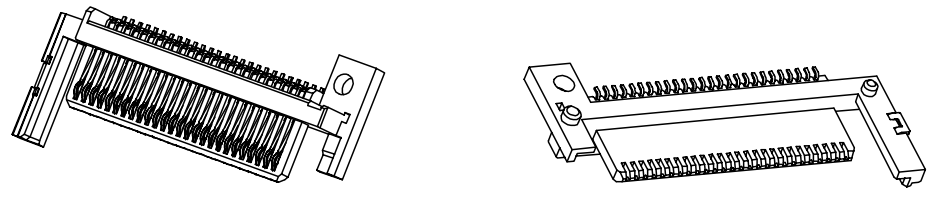
E

D

C

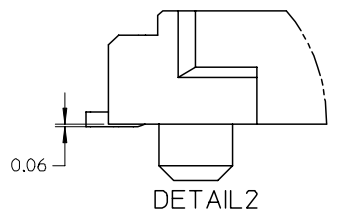
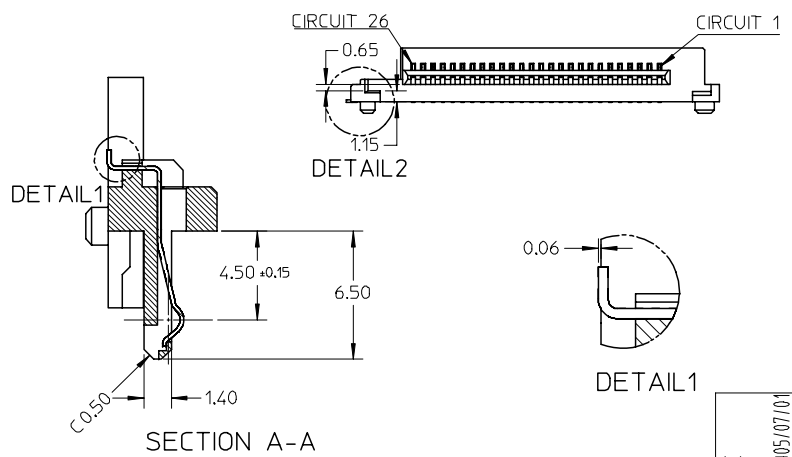
B

A



NOTES:

1. MATERIAL:
HOUSING: HIGH TEMPERATURE THERMOPLASTIC,
FITTING NAIL: COPPER ALLOY,
TERMINAL: COPPER ALLOY,
2. FINISH:
TERMINAL:
UNDERPLATING: Ni OVERALL,
SELECTIVE GOLD ON CONTACT AREA,
THICKNESS: 15 MICROINCH MINIMUM,
SELECTIVE PURE TIN ON SOLDER TAIL AREA,
THICKNESS: 40~100 MICROINCH,
3. COPLANARITY AT SOLDER TAIL TO BE 0.10 MAXIMUM,
4. APPLICABLE CARD SLOT PLEASE REFER TO SHEET 1
5. PRODUCT SPECIFICATION PLEASE REFER TO PS-47202-001

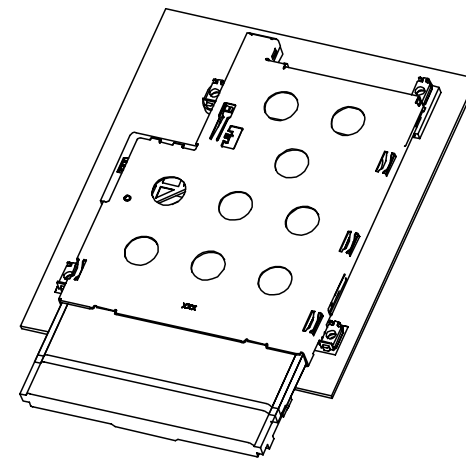
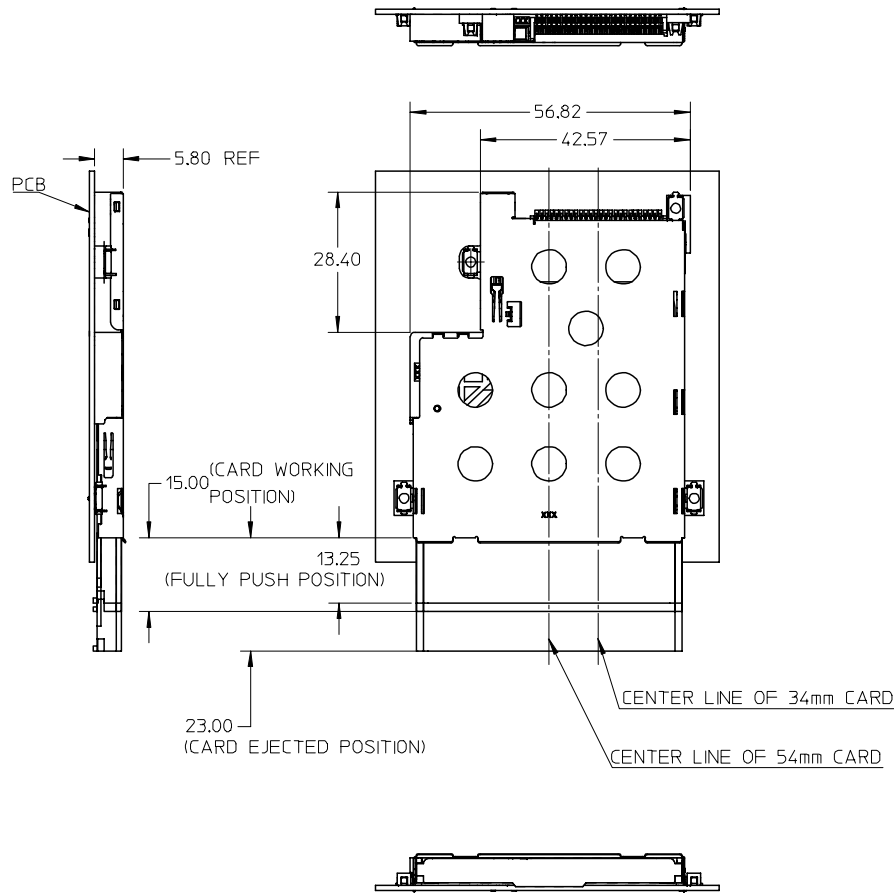


NEW RELEASE EC NO: SH2005-0413 DRWN: LBAO CHKD: APPR: YTYAP	2005/07/01 2005/07/01 2005/07/01	QUALITY SYMBOLS	GENERAL TOLERANCES (UNLESS SPECIFIED)		DIMENSION STYLE		SCALE	DESIGN UNITS	THIRD ANGLE PROJECTION			
		$\nabla=0$ $\sphericalangle=0$	mm	INCH	MM ONLY	2:1	METRIC					
			4 PLACES	\pm ---	\pm ---	DRAWN BY	DATE	TITLE				
			3 PLACES	\pm ---	\pm ---	R. BIAN	2004/12/14	EXPRESS CARD BOTTOM MOUNT PUSH-PUSH TYPE				
	2 PLACES	± 0.2	\pm ---	CHECKED BY	DATE	MOLEX INCORPORATED						
	1 PLACE	± 0.3	\pm ---	APPROVED BY	DATE	SHEET NO. 2 OF 4						
	ANGULAR $\pm 2^\circ$		DRAFT WHERE APPLICABLE MUST REMAIN WITHIN DIMENSIONS		MATERIAL NO.	DOCUMENT NO.						
				SIZE	47202-0002	SD-47202-001						
				THIS DRAWING CONTAINS INFORMATION THAT IS PROPRIETARY TO MOLEX INCORPORATED AND SHOULD NOT BE USED WITHOUT WRITTEN PERMISSION								

9 8 7 6 5 4 3 2 1

10 9 8 7 6 5 4 3 2 1

F
E
D
C
B
A



NOTES:

1. COMPONENTS:
 HEADER: SHEET 2
 EJECTOR: SHEET 1
2. PCB LAYOUT PLEASE REFER TO SHEET 4;
3. TAIL COMPLANARITY OF HEADER TO BE 0.10 MAXIMUM;
 TRUE POSITION IS 0.15 MAXIMUM BETWEEN SOLDER TAILS;
4. NON REFLOW PROCESS FOR CARD SLOT.
5. SCREW FASTENING TORQUE: 2.0 KGF-CM;
6. PRODUCT SPECIFICATION PLEASE REFER TO PS-47202-001.

NEW RELEASE EC NO: SH2005-0413 DRWN: LBAO CHKD: APPR: YIYAP	2005/07/01 2005/07/01 2005/07/01	DESCRIPTION REV	QUALITY SYMBOLS	GENERAL TOLERANCES (UNLESS SPECIFIED)	DIMENSION STYLE	SCALE	DESIGN UNITS	THIRD ANGLE PROJECTION	
			$\nabla=0$ $\sphericalangle=0$	mm INCH 4 PLACES ± --- ± --- 3 PLACES ± --- ± --- 2 PLACES ± 0.2 ± --- 1 PLACE ± 0.3 ± --- ANGULAR ± 2 °	MM ONLY	1:1	METRIC	DRAWN BY: R. BIAN DATE: 2004/12/14 CHECKED BY: DATE: APPROVED BY: DATE:	EXPRESS CARD BOTTOM MOUNT PUSH-PUSH TYPE
			DRAFT WHERE APPLICABLE MUST REMAIN WITHIN DIMENSIONS	MATERIAL NO. 47202-0001	DOCUMENT NO. SD-47202-001	SHEET NO. 3 OF 4			
			THIS DRAWING CONTAINS INFORMATION THAT IS PROPRIETARY TO MOLEX INCORPORATED AND SHOULD NOT BE USED WITHOUT WRITTEN PERMISSION						

9 8 7 6 5 4 3 2 1

